

Standard Tooth Types

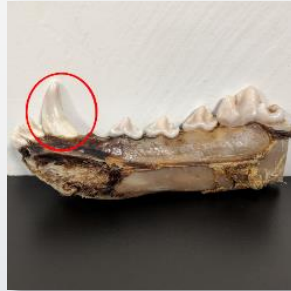
Matson's cementum age analyses are not only species-specific, but are also based on a standardized tooth type. Mixing of tooth types in a sample can cause error because of differences in eruption age and cementum patterns.

Cloven-hoofed Mammals



Primary Incisor (I1)

Most Carnivores



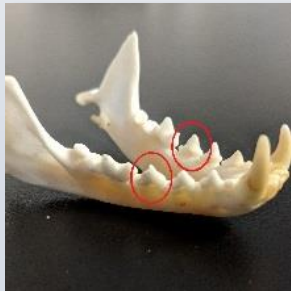
Lower Canine

Bears



Premolar 1 (PM1)

Martens & Fishers



Lower Premolar 4 (LPM4)

Mountain Lions



Upper Premolar 2 (UPM2)



Standard Tooth Types: Live Mammals

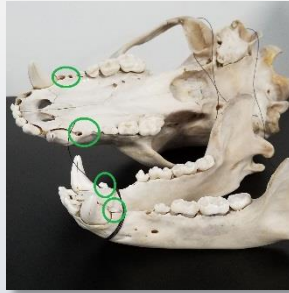
For live pull animals, it is often not possible to take the standard tooth.
In this case, these less invasive tooth types are recommended by the lab.

Cloven-hoofed Mammals



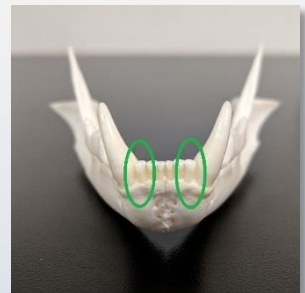
Lower Canine (LC)

Most Carnivores



Premolar 1 (upper or lower)

Lynx & Bobcats



Lateral Incisor