

Standard Tooth Types

Matson's cementum age analyses are not only species-specific, but are also based on standard tooth types. Mixing tooth types in a sample can cause error due to eruption age and cementum pattern differences.

Hoofed Mammals



Primary Incisor (I1)

Most Carnivores



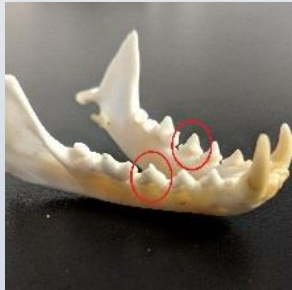
Lower Canine

Bears



Premolar 1 (PM1)

Martens & Fishers



Lower Premolar 4 (LPM4)

Mountain Lions



Upper Premolar 2 (UPM2)

